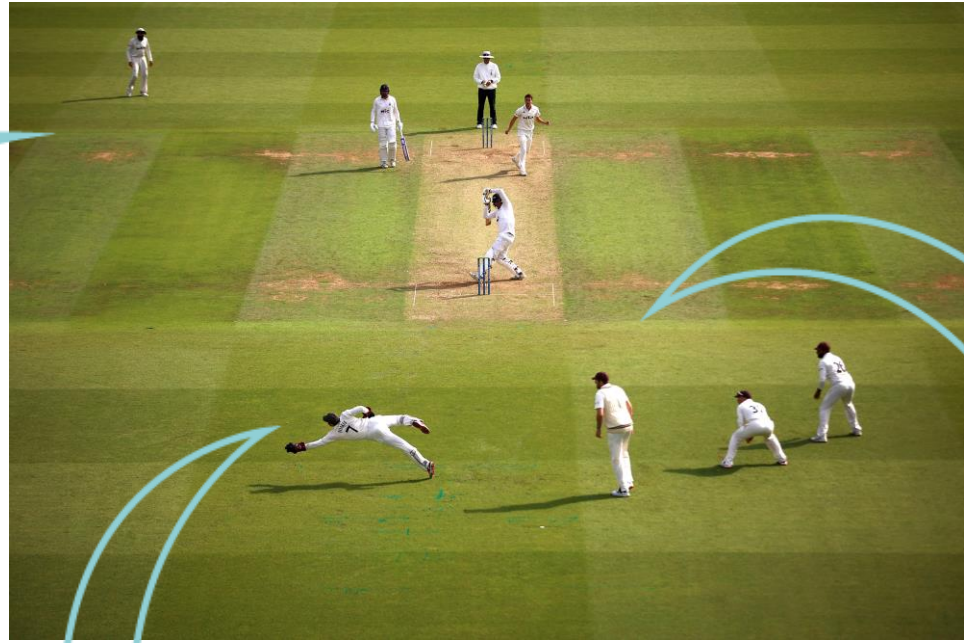


EVENTS & ENTERTAINMENT AT THE KIA OVAL



KIA OVAL
EVENTS &
ENTERTAINMENT



SUMMER PARTIES

£56.24pp

Terrace hire

from 17:30 - Dusk

Sumptuous 2 Course Street Food Menu

Account or Cash Bar

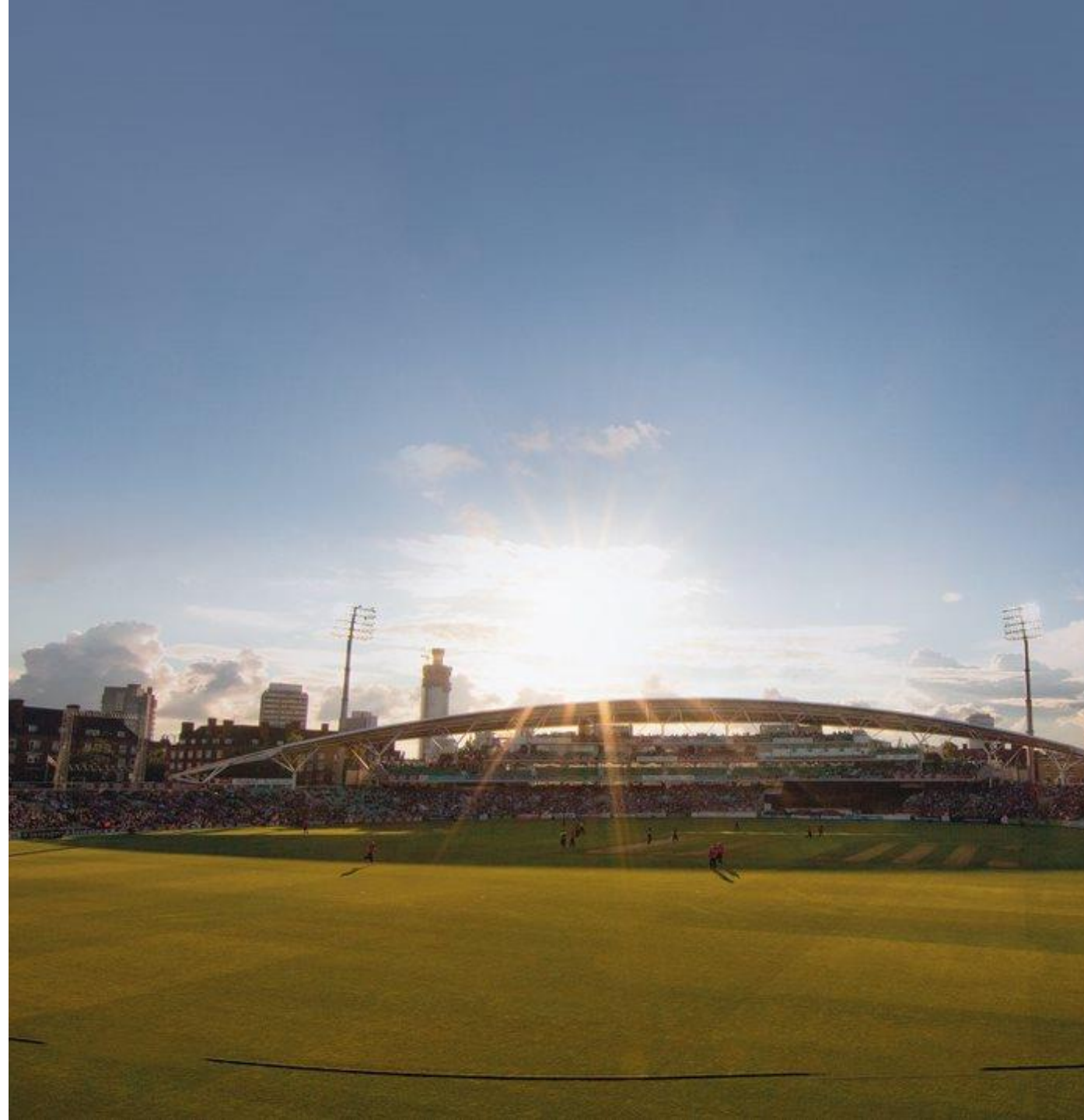
Indoor After Party Area with IPod connectivity

Until midnight

Upgrade Options

There are a multitude of upgrade options available – please speak to your sales executive for more details

Min. 50 guests



DRINKS PACKAGES

B – Chapel Down English Sparkling wine, house wine, house beer and soft drinks

£17.40 + VAT / per person / per hour

D – Prosecco, house wine and soft drinks

£15.90 + VAT / per person / per hour

E – House wine, house beer and soft drinks

£14.30 + VAT / per person / per hour

F – Unlimited Soft drinks

£18.40 + VAT per event

G – House wine, house beer and soft drinks served for three hours

£26.60 + VAT / per person / per 3 hours

H – Two alcoholic cocktails (exc. Pimms royal) and one mocktail

£40.98 + VAT / per person / per hour

Other options available

All prices are per person and exclude VAT

All dietary requirements must be provided at least 5 full working days prior to the event start date.

Please be aware we cannot guarantee trace-free food - if you require allergen information please contact a member of staff on the day.





175 SUITE

The largest space in the new stand can hold up to 700 people theatre style with floor to ceiling glass along the pitch facing walls. Included in the room hire is an organisers office as well as a viewing platform – perfect for pre-dinner entertainment. This room has access onto a private terrace as well as direct access into the Pavilion for breakout spaces.



SET-UP TYPE	QUANTITY
Theatre	700
Cabaret	450
Dining	520
Reception	900
U-Shape	Bespoke
Classroom	Bespoke

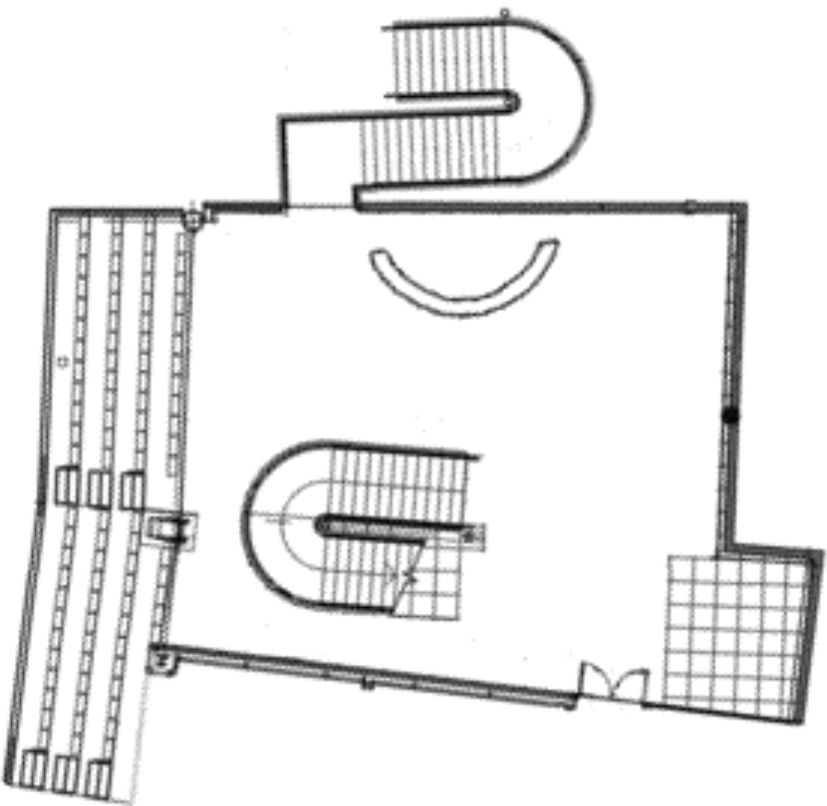
DIMENSIONS	
Length	44
Width	26
Height	6
Sqm2	736



All measurements are completed in meters and are approximate.

1845 TERRACE

The 1845 Terrace, named after the year Surrey Cricket Club was formed, is located on the third floor of the JM Finn Stand. Accommodating up to 100 guests on an informal basis, the Terrace is perfect for end of conference drinks, or maybe a BBQ lunch for your delegates to break up the day.



All measurements are completed in meters and are approximate.

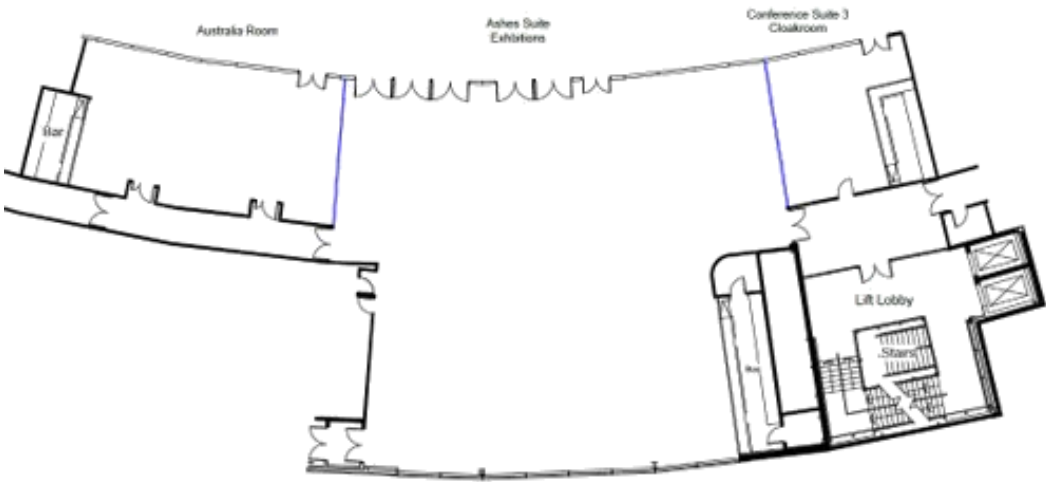
SET-UP TYPE	QUANTITY
Reception	85

DIMENSIONS	
Length	12
Width	12
Sqm2	100



ASHES SUITE

The Ashes Suite, named after the famous and ancient Cricket series between England and Australia, is located on the first floor. The space can accommodate 500 guests informally, up to 300 dining or 380 theatre style. With a wall of windows overlooking the pitch, the room features an abundance of natural daylight and has complimentary high-speed Wi-Fi for all your delegates.



SET-UP TYPE	QUANTITY
Theatre	380
Cabaret	280
Dining	320
Reception	500
U-Shape	bespoke
Classroom	bespoke

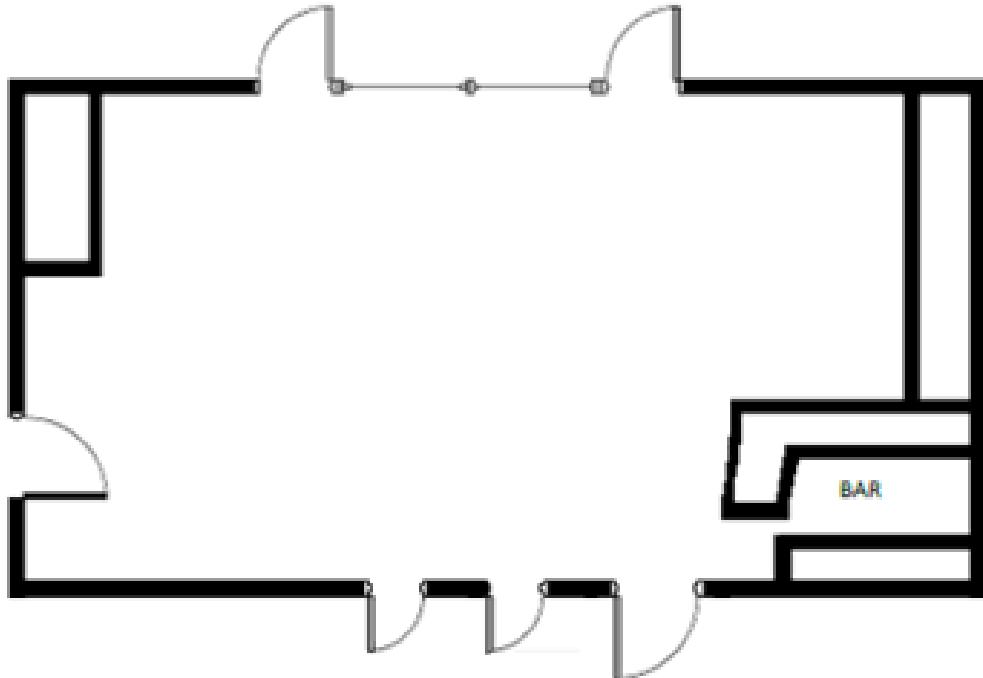
DIMENSIONS	
Length	23
Width	20
Height	2.7
Sqm2	482



All measurements are completed in meters and are approximate.

COMMITTEE ROOM

The Committee Room is the “inner sanctum” of the Kia Oval. This intimate room can accommodate up to 28 guests, boardroom style. Hosting royalty, politicians and celebrities on major matchdays, the Committee Room is the perfect space for your high-level boardroom meeting or dinner.



SET-UP TYPE	QUANTITY
Theatre	30
Cabaret	24
Dining	28
Reception	60
U-Shape	18
Classroom	16

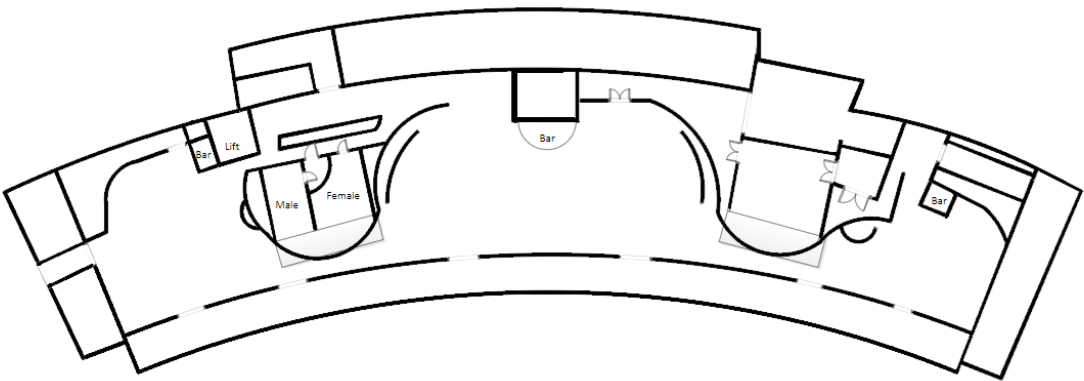
DIMENSIONS	
Length	10
Width	6
Height	3.2
Sqm2	62



All measurements are completed in meters and are approximate.

CORINTHIAN ROOF TERRACE

The Corinthian Roof Terrace is the Kia Oval’s “hidden gem”. Sitting right at the top of the JM Finn Stand, this covered area can hold up to an impressive 600 guests on an informal basis. There are spectacular views of the pitch on one side and the impressive London skyline on the other side. There are food service stations, bars and even a DJ booth on the Corinthian Roof Terrace, making the area perfect for summer parties or post-conference drinks.



SET-UP TYPE	QUANTITY
Reception	600

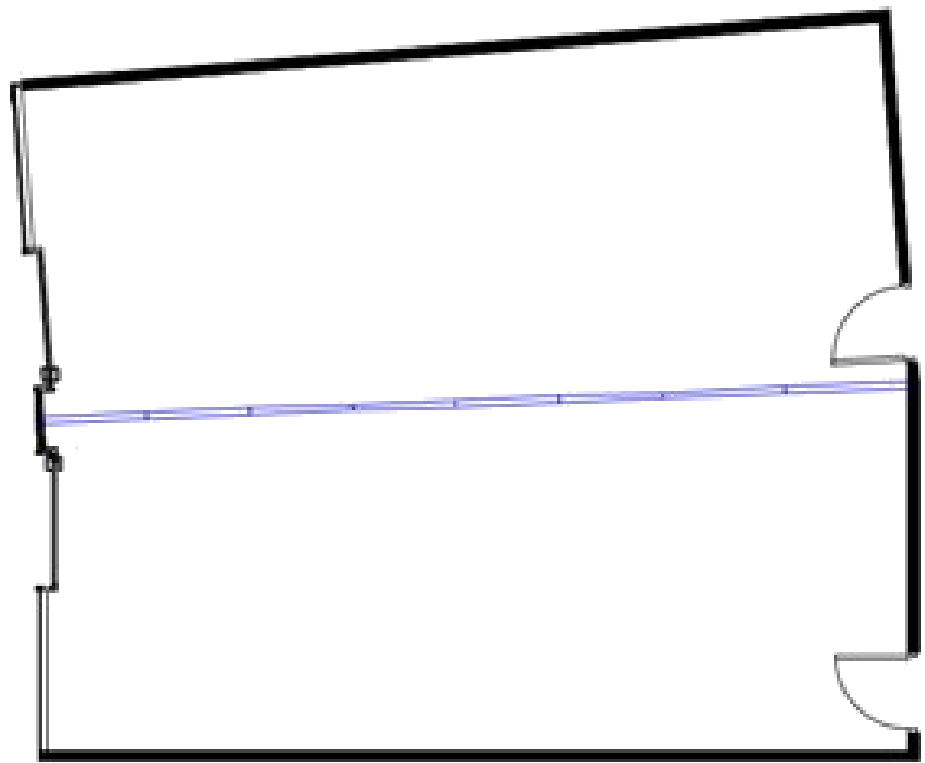
DIMENSIONS	
Length	77
Width	15
Sqm2	569



All measurements are completed in meters and are approximate.

DOUBLE EXECUTIVE BOX

Two of the Executive Boxes at the Kia Oval open up into a double sized room, working perfectly for smaller meetings of up to 50 guests. Located on the third floor, there is a plasma screen in each Double Executive Box for presentations or viewings. The Double Boxes lead out onto private balconies overlooking the pitch, and include complimentary Wi-Fi and air conditioning.



SET-UP TYPE	QUANTITY
Theatre	50
Cabaret	32
Dining	48
Reception	50
U-Shape	26
Classroom	24

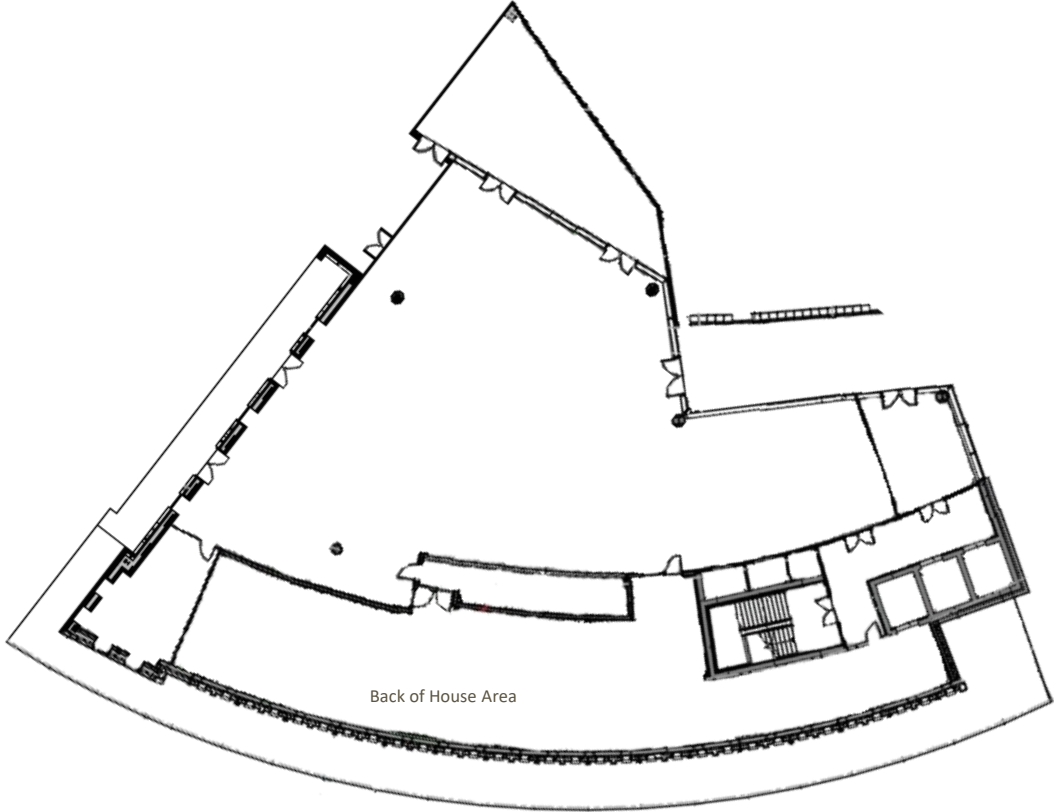
DIMENSIONS	
Length	8
Width	8
Height	2.6
Sqm2	64



All measurements are completed in meters and are approximate.

DUCHY SUITE

The Duchy Suite will hold up to 550 theatre style with a separate cloakroom area on the same floor. This room also has 6m high ceilings and floor to ceiling windows. This room will also have access onto 2 private terraces as well as direct access into the Pavilion for breakout spaces.



SET-UP TYPE	QUANTITY
Theatre	420
Cabaret	380
Dining	380
Reception	650
U-Shape	Bespoke
Classroom	Bespoke

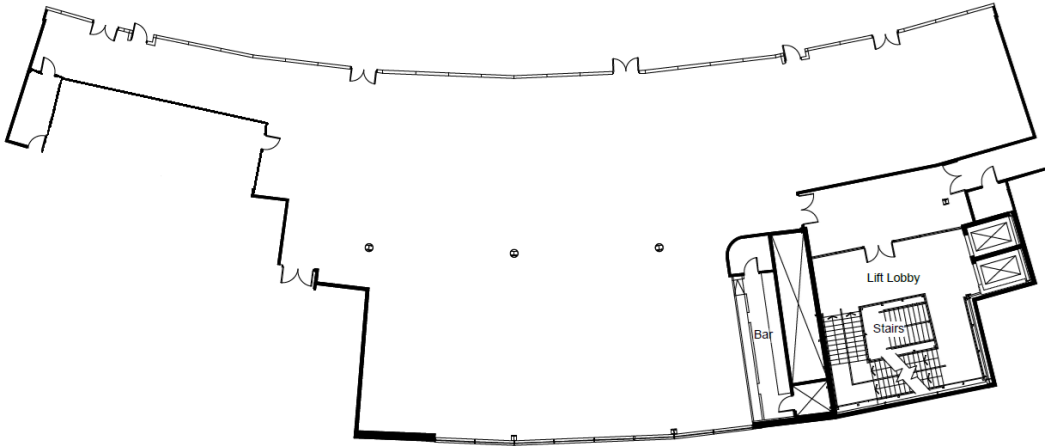
DIMENSIONS	
Length	37
Width	24
Height	6
Sqm2	517



All measurements are completed in meters and are approximate.

ENGLAND CLUB

The England Club, is the largest purpose-built conference room in the JM Finn Stand. Capable of accommodating up to 650 guests theatre style, or 510 for a dinner, this second floor suite is one of the most versatile spaces at the Kia Oval. Doors lead directly onto the Club-Level balcony overlooking the pitch, and a wall of windows ensures natural daylight floods the room.



SET-UP TYPE	QUANTITY
Theatre	700
Cabaret	440
Dining	500
Reception	650
U-Shape	Bespoke
Classroom	Bespoke

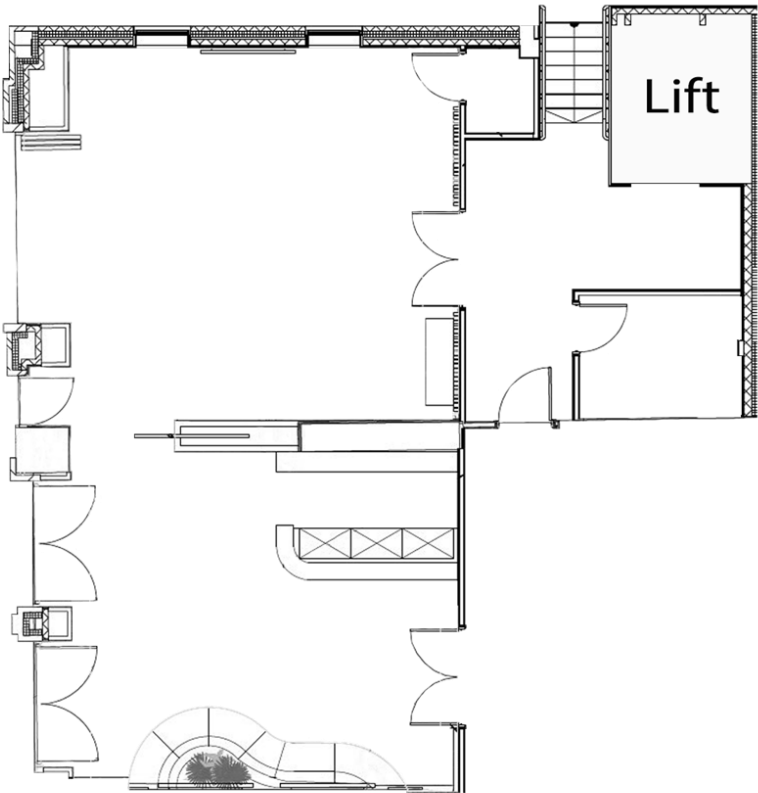
DIMENSIONS	
Length	29
Width	20
Height	2.5
Sqm2	606



All measurements are completed in meters and are approximate.

GRAHAM THORPE ROOM

The Graham Thorpe Room is located on the fourth floor of the pavilion. This room splits into two sub sections. One is a casual seating perfect for a lounge or green room and the other is ideal for a board meeting. The room has a stunning balcony overlooking the pitch.



SET-UP TYPE	QUANTITY
Theatre	40
Cabaret	30
Dining	30
Reception	80
U-Shape	16

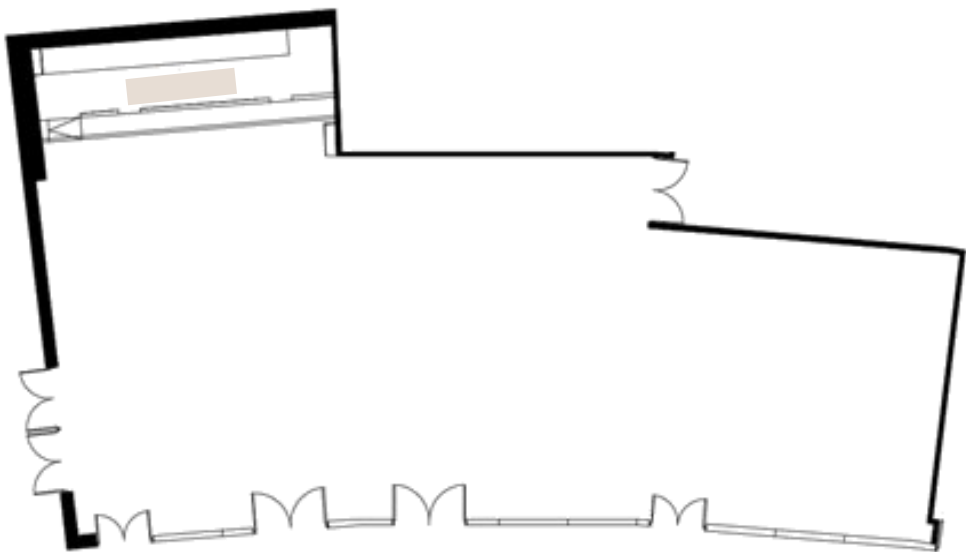
DIMENSIONS	
Length	6
Width	12
Height	2.7
Sqm2	72



All measurements are completed in meters and are approximate.

INDIA ROOM

The India Suite is located on the second floor of the JM Finn Stand. There is a large private covered terrace with a bar, which makes the room perfect for summer conferences with an al fresco lunch or perhaps a post-conference Pimms whilst watching the cricket? There is complimentary Wi-Fi for all delegates inside the suite.



SET-UP TYPE	QUANTITY
Theatre	170
Cabaret	140
Dining	160
Reception	200
U-Shape	78
Classroom	55

DIMENSIONS	
Length	23
Width	9
Height	2.3
Sqm2	234



All measurements are completed in meters and are approximate.

JARDINE SUITE

The Jardine Suite is the Kia Oval’s ultimate “blank canvas” room. Situated on the ground floor of the JM Finn stand, the room features a large central area flanked by two large wings, and is perfect for exhibitions of up to 50 shell scheme stands. The Capacities to the right are for the central section only.



SET-UP TYPE	QUANTITY
Theatre	400
Cabaret	380
Dining	450
Reception	550
U-Shape	Bespoke
Classroom	Bespoke

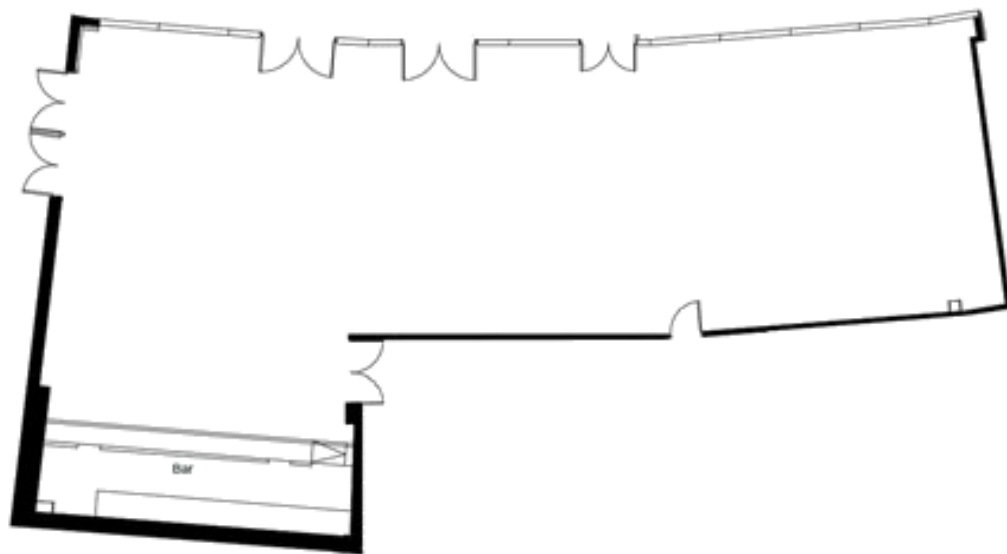
DIMENSIONS	
Length	126
Width	24
Height	4.5
Sqm2	1549



All measurements are completed in meters and are approximate.

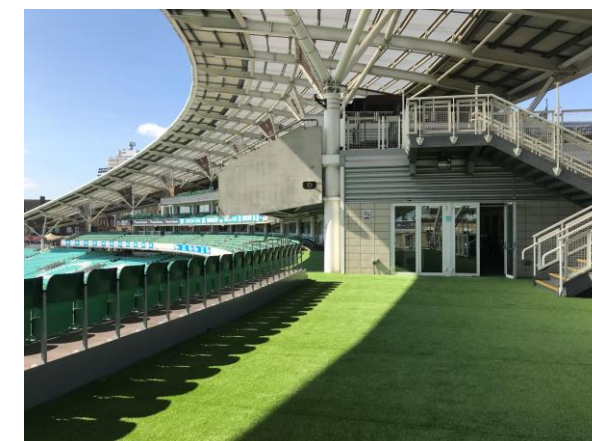
JOHN MAJOR ROOM

The John Major suite is located on the second floor of the JM Finn Stand, and has a private terrace and outdoor seating overlooking the famous Oval wicket. The room can accommodate 160 guests in a dining capacity, 140 cabaret, or 170 theatre style. There's complimentary Wi-Fi for all delegates as well as natural daylight and air conditioning throughout.



SET-UP TYPE	QUANTITY
Theatre	170
Cabaret	140
Dining	160
Reception	200
U-Shape	78
Classroom	108

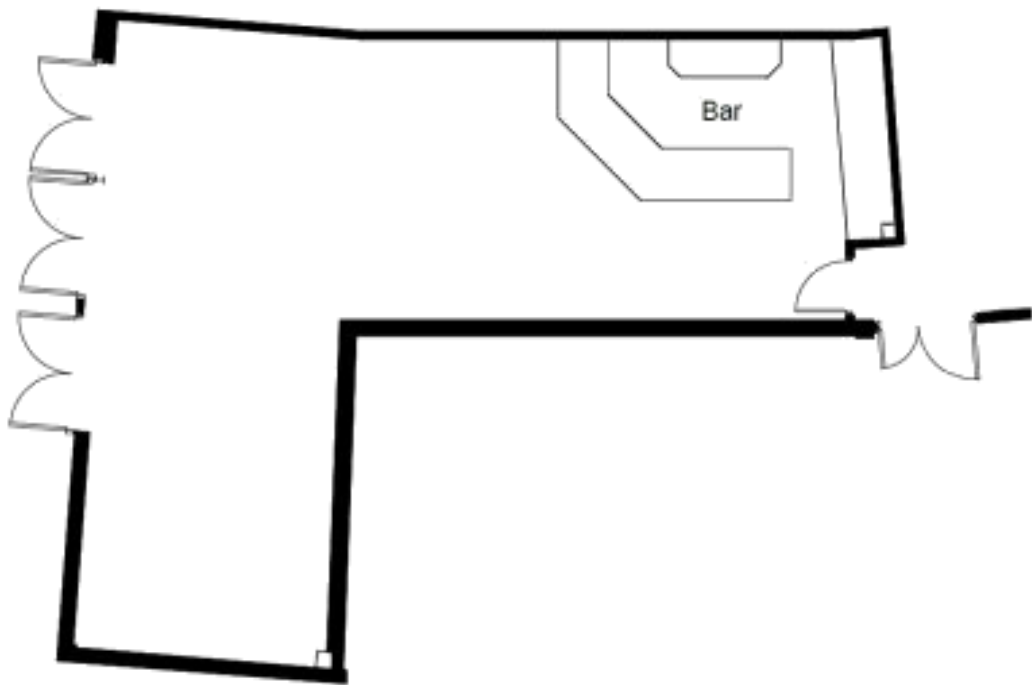
DIMENSIONS	
Length	24
Width	7
Height	2.3
Sqm2	168



All measurements are completed in meters and are approximate.

LEGENDS LOUNGE

The Legends Lounge is located on the third floor of the JM Finn stand, next to the TV studios and commentary boxes. Perfect for more intimate meetings or drinks receptions, the suite can hold up to 60 people informally. The private terrace outside the room features spectacular views of the Oval wicket to one side and the skyline of the City of London on the other side.



SET-UP TYPE	QUANTITY
Theatre	40
Cabaret	40
Dining	60
Reception	60
U-Shape	30
Classroom	24

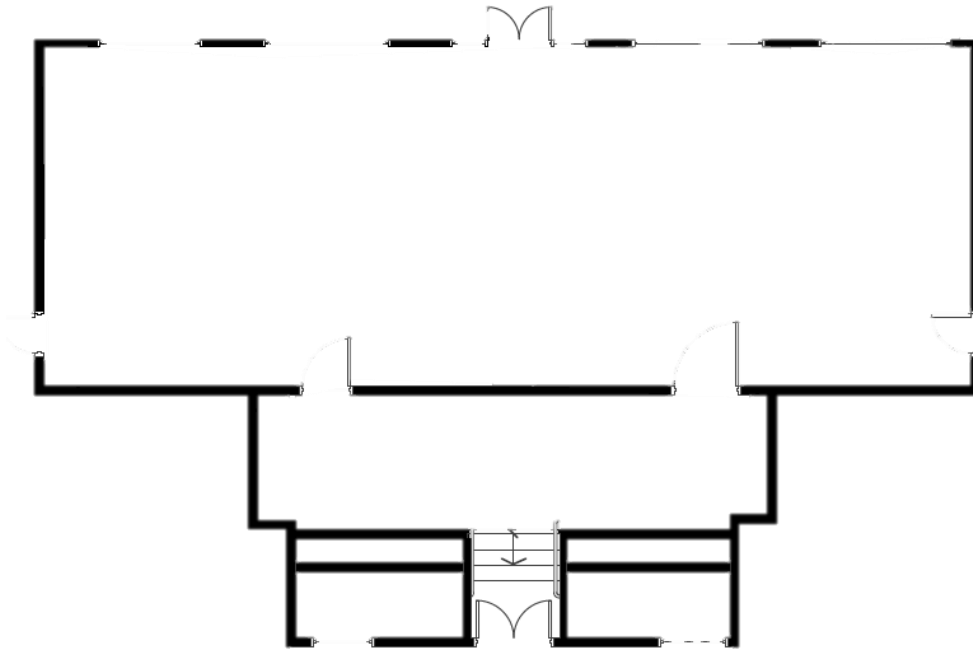
DIMENSIONS	
Length	10
Width	3
Height	2.6
Sqm2	40



All measurements are completed in meters and are approximate.

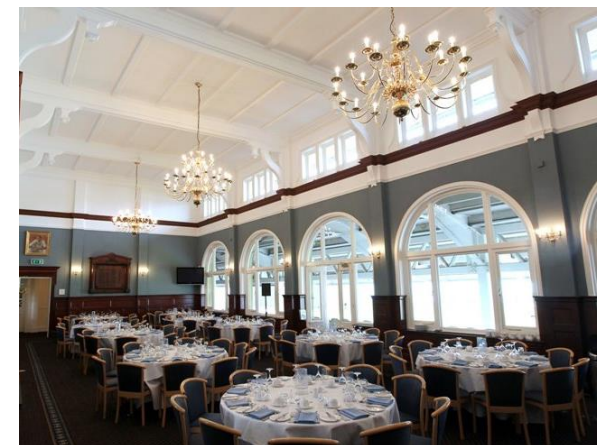
LONG ROOM

The Long Room is the most historic room within the Members Pavilion. Built in 1898, the room is steeped in history, with portraits of the Surrey greats adorning the walls. The huge windows and high ceiling allow for plenty of natural daylight and the doors lead out directly to the side of the pitch, so your guests can take their coffee breaks and lunches whilst taking in spectacular pitch side views.



SET-UP TYPE	QUANTITY
Theatre	100
Cabaret	100
Dining	100
Reception	120
U-Shape	46
Classroom	Bespoke

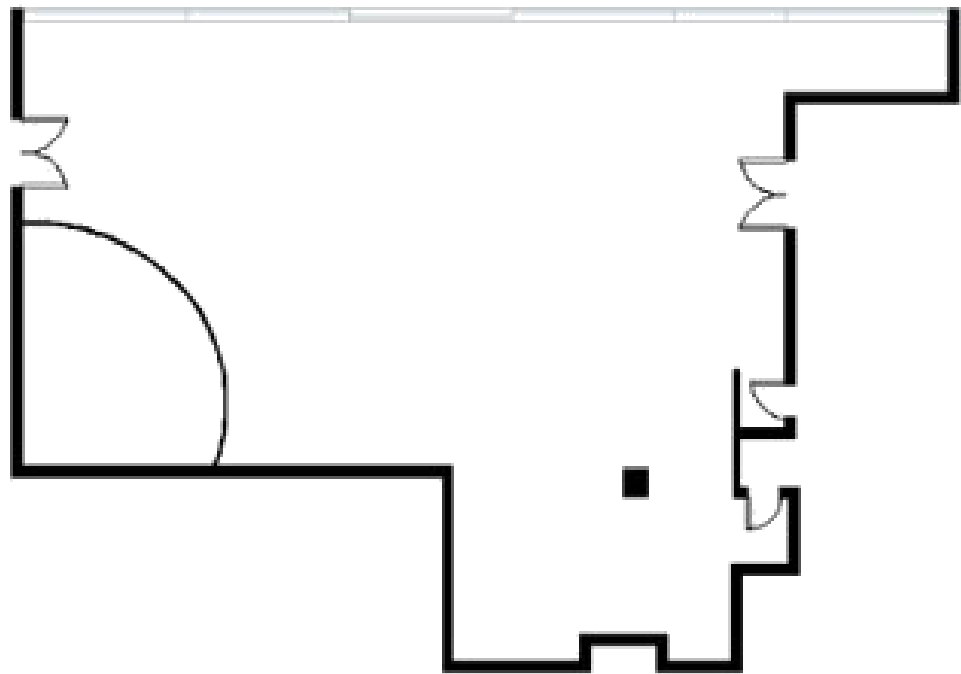
DIMENSIONS	
Length	18
Width	7
Height	6.5
Sqm2	135



All measurements are completed in meters and are approximate.

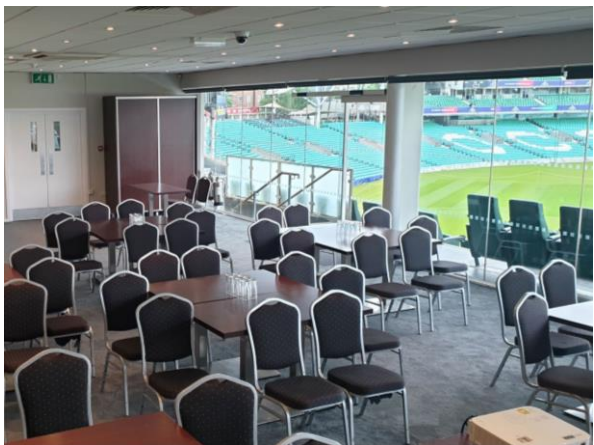
MONTPELIER CLUB

The Montpelier Club is named after the predecessor to Surrey County Cricket Club. Offering floor-to-ceiling windows across its entire length, the room features an abundance of natural daylight. Leading directly out to padded executive seating overlooking the pitch and located next to the Surrey and England players changing room, this is the perfect space for any cricket fan!



SET-UP TYPE	QUANTITY
Theatre	60
Cabaret	56
Dining	72
Reception	80
U-Shape	40
Classroom	34

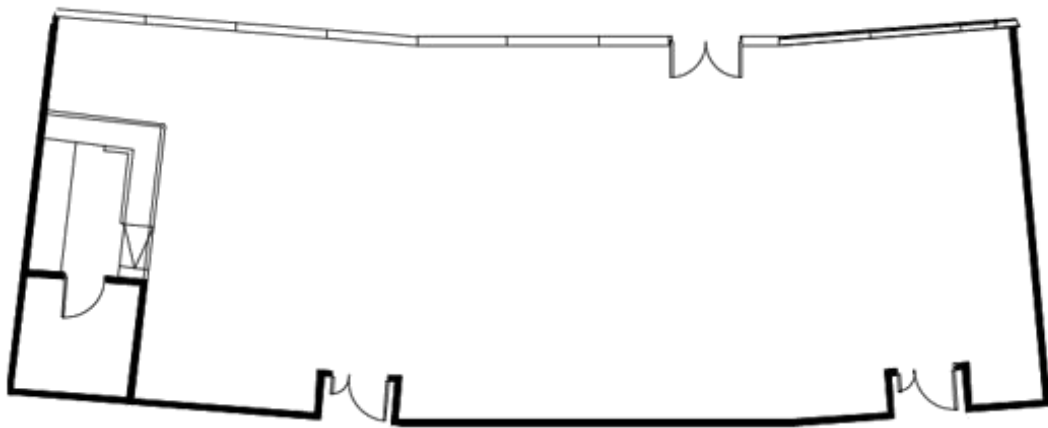
DIMENSIONS	
Length	13
Width	7
Height	2.7
Sqm2	106



All measurements are completed in meters and are approximate.

PAKISTAN ROOM

The Pakistan Suite is located on the first floor and features outstanding views of the famous Oval wicket. One of the more intimate rooms in the JM Finn Stand, the maximum capacity for an informal event is 120, whilst the room can hold 110 in a theatre or 100 dining capacity. With the pitch views comes plenty of natural daylight and complimentary highspeed Wi-Fi for all delegates.



SET-UP TYPE	QUANTITY
Theatre	110
Cabaret	90
Dining	100
Reception	120
U-Shape	51
Classroom	48

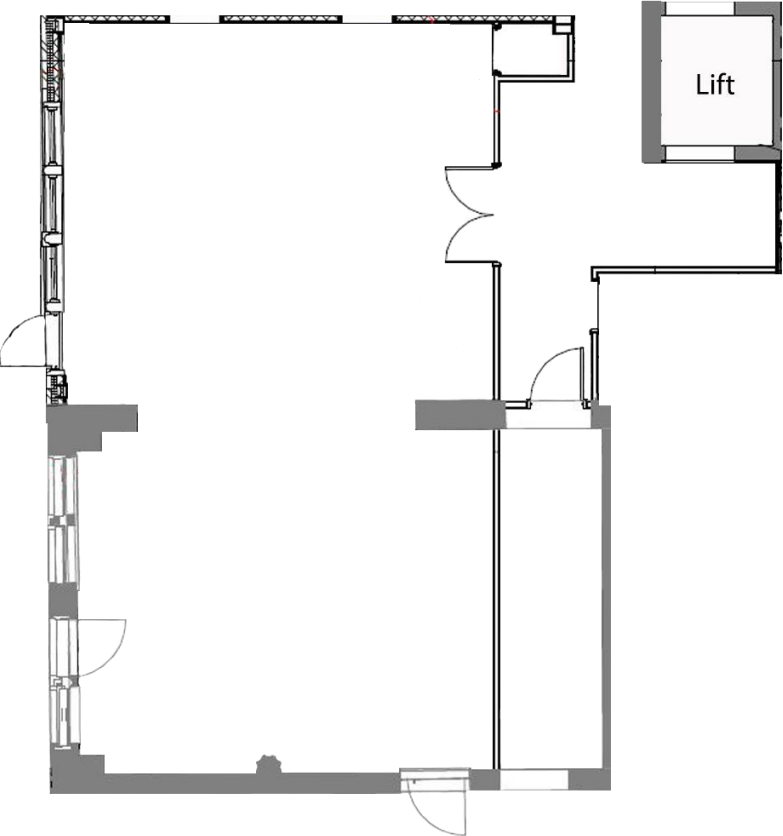
DIMENSIONS	
Length	19
Width	7
Height	2.7
Sqm2	153



All measurements are completed in meters and are approximate.

PRINCE OF WALES

The Prince of Wales Room is located on the second floor of the pavilion. This room can accommodate up to 60 in cabaret layout, 80 in theatre style and has a stunning balcony overlooking the pitch for a reception style event.



SET-UP TYPE	QUANTITY
Theatre	70
Cabaret	70
Dining	70
Reception	80
U-Shape	46
Classroom	Bespoke

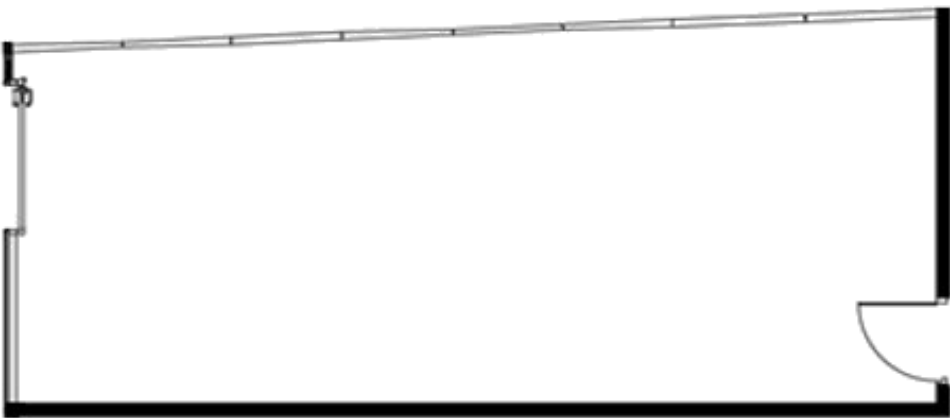
DIMENSIONS	
Length	6
Width	12
Height	2.7
Sqm2	72



All measurements are completed in meters and are approximate.

SINGLE EXECUTIVE BOXES

There are over 25 Executive Boxes at the Kia Oval, accommodating up to 24 guests each. These suites, on the third floor, are perfect for smaller board meetings, interview rooms or staff offices for larger events. All of the boxes include a plasma screen for presentations and have access to individual balconies with seats overlooking the pitch. There is air-conditioning and Wi-Fi in every box.



SET-UP TYPE	QUANTITY
Theatre	30
Boardroom	26
Dining	26
Reception	24
U-Shape	24
Classroom	9

DIMENSIONS	
Length	8
Width	3
Height	2.6
Sqm2	24

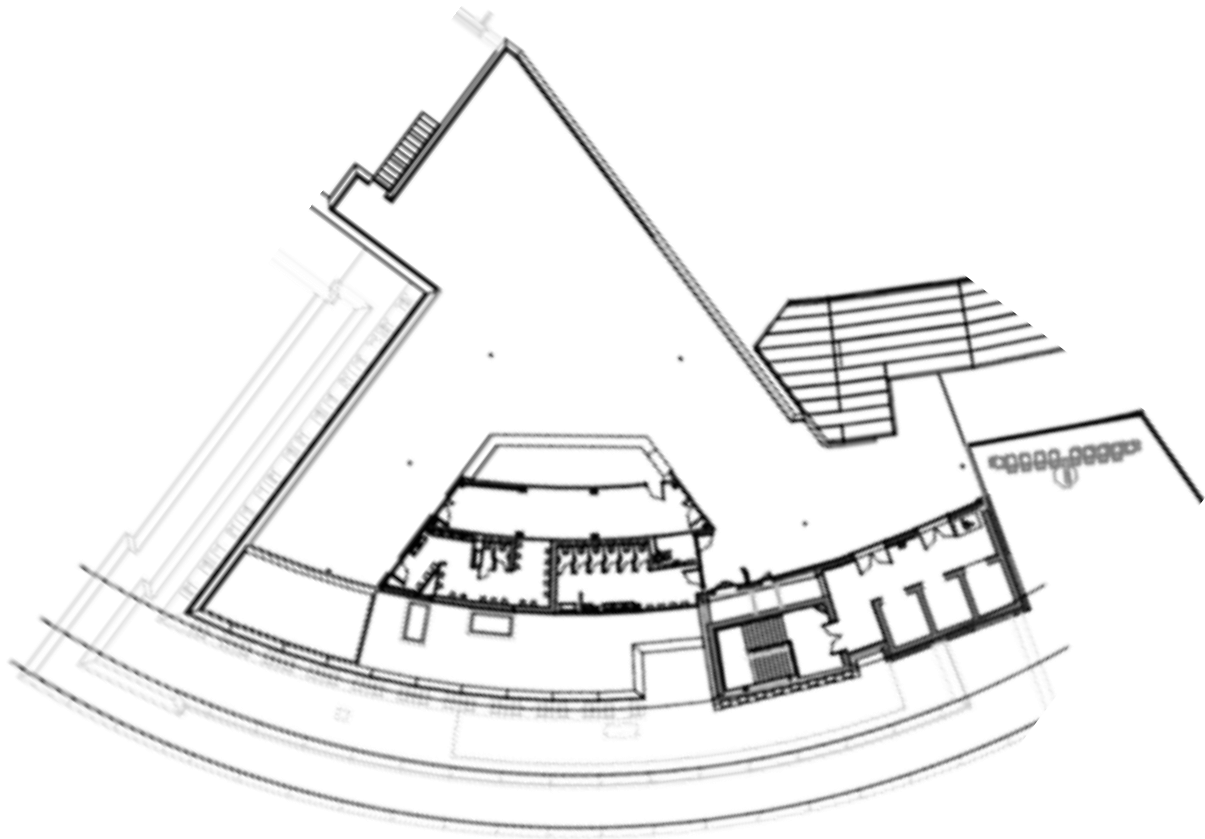


All measurements are completed in meters and are approximate.

SYLVESTER'S BAR

Sylvester's Bar is on the 3rd floor of the Galadari Stand attached to the Lock Balcony. The bar and balcony has commanding views across the pitch and over London. It is the perfect space for post conference cocktails or pre-dinner drinks.

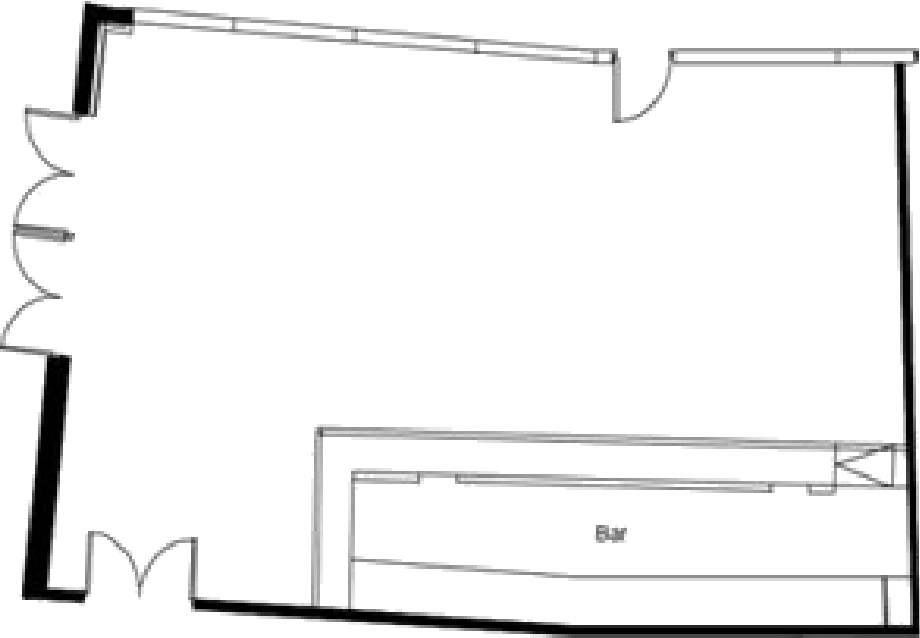
SET-UP TYPE	QUANTITY
Reception	500



All measurements are completed in meters and are approximate.

WEST INDIES ROOM

The West Indies Room, on the first floor of the JM Finn Stand, is located next to the Press Lounge and features a very large private terrace. Both the indoor and outdoor areas overlook the Kia Oval pitch, and the outside area is covered, making this suite perfect for a smaller teambuilding or BBQ event.



SET-UP TYPE	QUANTITY
Theatre	70
Cabaret	50
Dining	60
Reception	70
U-Shape	40
Classroom	15

DIMENSIONS	
Length	12
Width	7
Height	2.6
Sqm2	80



All measurements are completed in meters and are approximate.

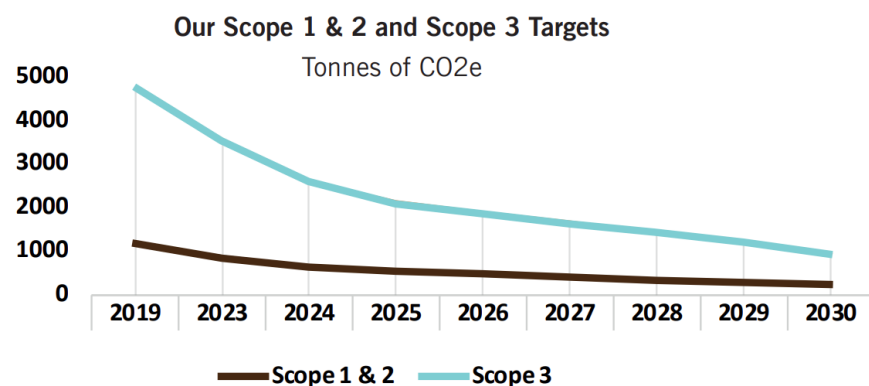
SUSTAINABILITY

This year we have confirmed our pledge to achieve Net Zero carbon emissions by 2030. This is an important and ambitious target to ensure that we are able to continue to play cricket and operate in the future. We arrived at this target by looking at our base year of 2019 and have used that year as our comparison.

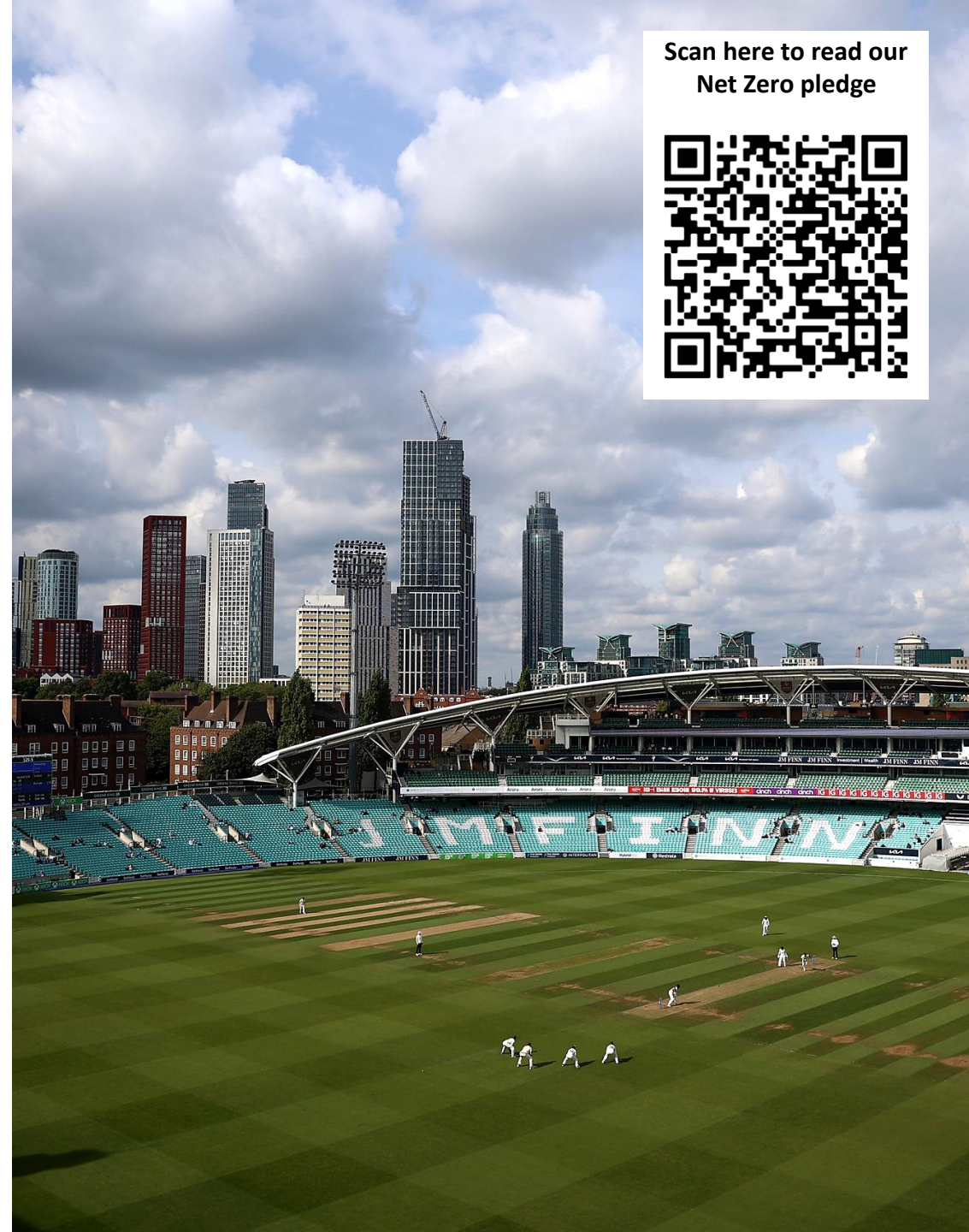
The forecasted reduction in our carbon footprint is presented to the right:

To help us achieve our goal, we have set the following targets for 2023:

- Reduce our electricity usage against our base year of 2019
- Reduce our carbon emission by 25% against our base year of 2019
- Increase recycling rates to 50% across 2023
- Instigate positive behavioural change within all business stakeholders



Scan here to read our
Net Zero pledge



ACCESS

Changing Places Facility:

- For those who need extra equipment and space to allow them to use the toilets safely and comfortably we have a Changing Places facility located on the 1st floor of the JM Finn stand.

Deaf or Hard of Hearing Guests:

- Induction loops can be temporarily installed in all rooms free of charge at the prior request of the event organiser; induction loops are also installed at all receptions and security areas which can be access by switching a hearing aid to M or T.

Those with Ambulant disabilities:

- Conference parking for Blue badge holders is available, please contact your sale person to book this in.
- Accessible toilet facilities are available throughout the ground with the majority requiring a RADAR key. If you are not in possession of such a key then contact the nearest reception who will source one for you immediately.
- Emergency cords are situated in all accessible toilets.

Additional Information:

- 95% of all internal areas are wheelchair friendly
- Should you have any queries regarding access then please contact our Accessibility Liaison Officer, Theresa Peters, on tpeters@surreycricket.com for further information.



TESTIMONIALS

"We have used The Kia Oval for various events and have always been very happy with the service we have received.

I cannot single out one event as all have been handled with the utmost professionalism and 'can do' approach. From the start of the booking process to the end of the event, The Kia Oval team are always courteous, accommodating and willing to make it work for the client.

The roof top area is a great addition to the event space and we've been lucky enough to have used it twice and our Partners enjoyed the experience of being able to overlook the grounds with a drink in hand!

If we have a large event, The Kia Oval is always our first thought as its 'TNT.....Tried n' Trusted'!"

- PA to Customer Director, John Lewis



LOCATION

- Complimentary parking for organisers
- Outside the congestion Charge Zone
- On London's Super Cycle Highway
- Walking Distance from 4 underground stations
- Close to the Over ground station
- 10 minutes from Bank Underground



ALEC STEWART GATE

SAT NAV: SE11 5SS

VAUXHALL STATION



When leaving the station walk through the tunnel towards Kennington. Cross at the traffic lights and walk down Harleyford Road to your right. As you walk down the road you will see the Kia Oval on your left and the Alec Stewart Gate is situated on the corner.

Tube: Victoria Line

National Rail: South Western Railway

Buses: 2, 36, 77, 87, 88, 156, 196, 185, 344, 360, 436

Santander Cycles

OVAL STATION



Take the Northern line to Oval underground station. Turn left out of the station and cross at the traffic lights. Continue walking left down Harleyford Road and the Oval is on your right hand side. The Alec Stewart Gate is situated on the far side of the grounds so please continue to walk round the ground. The gate will be on your right.

Tube: Northern Line

Buses: 36, 155, 185, 333, 436



JOHN EDRICH GATE

VAUXHALL STATION



When leaving the station walk through the tunnel towards Kennington. Cross at the traffic lights and walk down Harleyford Road to your right. As you walk down the road you will see the Kia Oval on your left follow the ground around and you will then see the John Edrich Gate.

Tube: Victoria Line

National Rail: South Western Railway

Buses: 2, 36, 77, 87, 88, 156, 196, 185, 344, 360, 436

Santander Cycles

OVAL STATION



Turn left out of the station and cross at the traffic lights. Continue walking left down Harleyford road and the Oval is on your right hand side. The John Edrich Gate is the entrance straight ahead.

Tube: Northern Line

Buses: 36, 155, 185, 333, 436



THE GALADARI STAND

VAUXHALL STATION



When leaving the station walk through the tunnel towards Kennington. Cross at the traffic lights and walk down Harleyford Road to your right. As you walk down the road you will see the Kia Oval on your left follow the ground around and you will see the Galadari Stand, continue walking to the reception with street access.

Tube: Victoria Line

National Rail: South Western Railway

Buses: 2, 36, 77, 87, 88, 156, 196, 185, 344, 360, 436

Santander Cycles

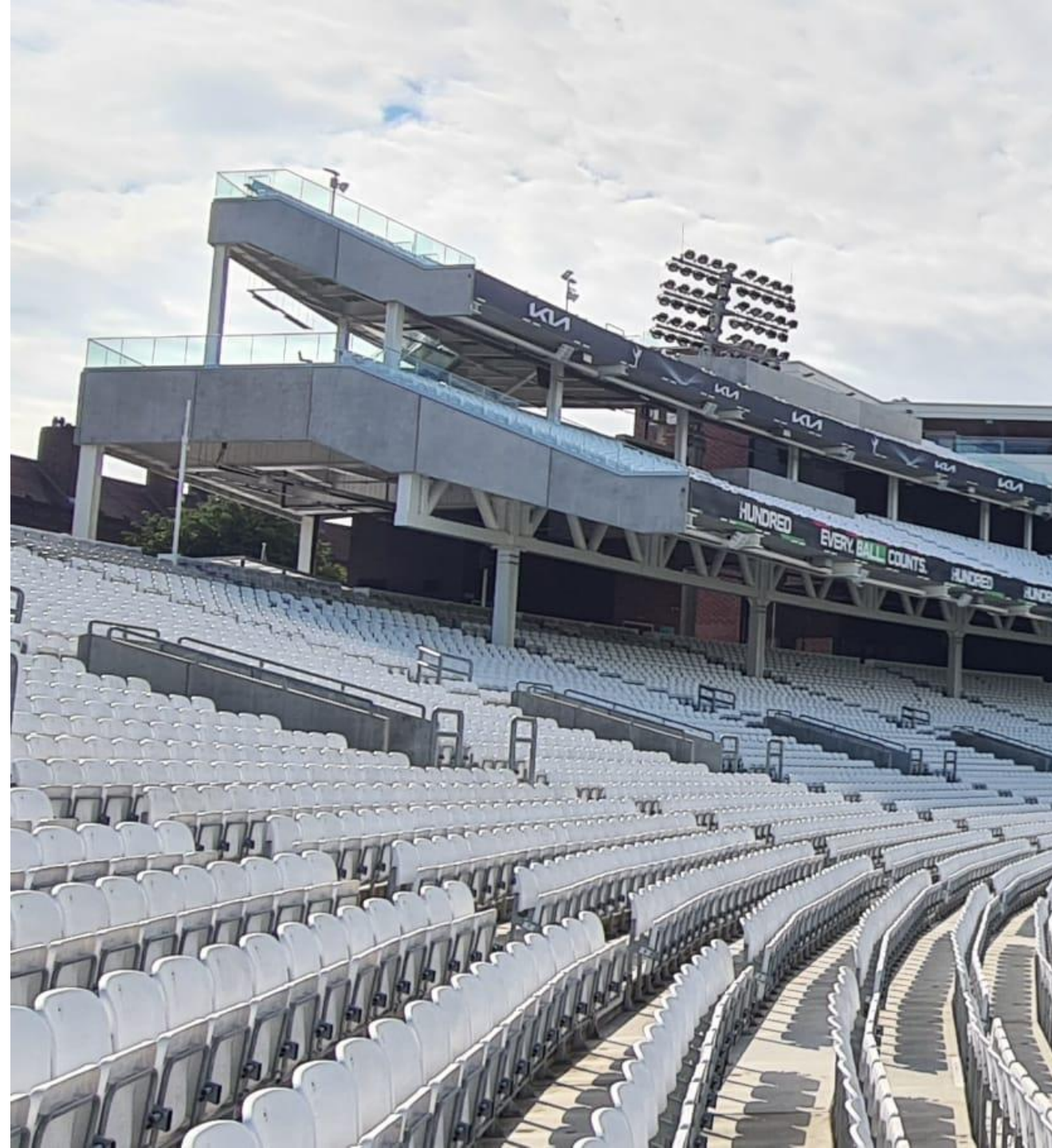
OVAL STATION



Turn left out of the station and cross at the traffic lights. Continue walking left down Harleyford road and the Oval is on your right hand side. The Galadari Stand is the large building on the right of the Pavilion, walk around the Oval to the right and you will see the reception with street access.

Tube: Northern Line

Buses: 36, 155, 185, 333, 436





KIA OVAL
EVENTS &
ENTERTAINMENT



@KiaOvalEvents

0207 820 5670

enquiries@kiaoval.com